

YOMINDIA POWER PRIVATE LIMITED

CIN : U31900PN2021PTC202796

GST : 27ABGCS4799A1Z2

MSME : MH-26-0136442

+91 9822399538
+91 7030006838

www.yomindiapower.com
admin@yomindiapower.com

Gate No.311, Plot No. 7, 8, Gaud Dara Road, Nr. Chate College, Khed Shivapur, Pune- 412205, Maharashtra, India.

INTRODUCTION

- ▶ Started in 2016, Yomindia has transformed itself into a Private Limited Company in 2021, **M/s. Yomindia Power Pvt Ltd** has recorded growth in its operations to meet increasing demand for manufactured components and solutions. Manufacturing Facility spread in Constructed area of 48,000 square feet of modern manufacturing space Located at **Unit 1&2** - Khed-Shivapur, Pune-Bangalore Highway, Maharashtra India. Yomindia Power Pvt Ltd employs highly skilled people with experience using a broad range of manufacturing processes and materials. Yomindia Power Pvt Ltd specializes in the fields of design, manufacturing, acoustic & ventilation solutions, and a wide range of turnkey projects. For products where quality and visual appearance is critical, Yomindia Power Pvt Ltd excels. Equipped with latest Laser cutting machine, Yawei make turret punching machine, CNC Bending machines and design software's enable the company to minimize prototyping and maximise production. The just in time manufacturing and minimized inventory practices have ensured that the customer expectations have been consistently improved. Repeated investments have ensured success in the many projects undertaken by the company.

VISION: Engineering for Sustainable Growth of the Global Community

- ▶ Yomindia Power Pvt Ltd to Be "A First Choice of our Esteemed Customers" for their requirements of Infrastructural Sheet Metal & Acoustic. Develop in house End-to-End expertise in Developments, Design, and Manufacturing and on-site Sheet Metal Products.
- ▶ To consistently improve the quality of products offered to the Customer through innovative and advanced manufacturing processes, supplemented by world-class services to complement and support the diverse customer portfolio and be a leader trend settler and technology front-runner in providing sheet metal and acoustic solutions crafted to customer requirement.

MISSION: Global Leading Engineering Partner

- ▶ Yomindia Power Pvt Ltd believe in providing end to end solution to our customers ensuring best quality products & service excellence.

GROUP VALUE: Integrity, Creativity, Diversity, Learning, Team

YOMINDIA POWER PRIVATE LIMITED

CIN : U31900PN2021PTC202796 | GST : 27ABGCS4799A1Z2 | MSME : MH-26-0136442

+91 9822399538
+91 7030006838

www.yomindiapower.com
admin@yomindiapower.com

Gate No.311, Plot No. 7, 8, Gaud Dara Road, Nr. Chate College, Khed Shivapur, Pune- 412205, Maharashtra, India.

QUALITY POLICY:

- ▶ We at Yomindia Power Pvt Ltd are totally committed to enhancing customer satisfaction by providing them quality products and services, always on time meeting Customer requirements and specifications.
- ▶ While achieving this we as a team shall continually improve our quality management systems, processes, investments in research, development, training of employees, adopting the latest technology and safety standards to provide the product in a cost-effective manner.

ENVIRONMENTAL POLICY:

Yomindia Power Pvt Ltd is dealing in various products related to canopies for Gensets, control panels, heavy-duty storage equipment and acoustics for various equipment's used in industry.

- ▶ Matters pertaining to environment, occupational health and safety are an integral part of Yomindia Power Pvt Ltd total operations. Continual improvements achieved in these areas by controlling the processes causing environmental impacts and health safety hazards and by setting and reviewing the objectives. We consider that the greatest effect achieved is through preventive action.
- ▶ We adhere to an approach that results in long term sustainable development. Consequently, we strive for high efficiency in the use of energy and natural resources, promote systems for recovery and recycling of materials and work to prevent & minimize the contamination.
- ▶ We strive to offer safe and healthy working conditions that simulate employees to perform effectively assume responsibility & continue to develop in their personal and professional pursuits.
- ▶ We shall comply with or exceed environmental, occupational health and safety requirements set by applicable laws, ordinances and company law guidelines. We consider that common and environmentally effective requirements and standards should be established at an international level.
- ▶ We will encourage our suppliers; contractors adopt our environment, occupational health and safety policy principles.
- ▶ We will communicate this policy to all concerned and make it available to other interested parties on request.

YOMINDIA POWER PRIVATE LIMITED

CIN : U31900PN2021PTC202796 | GST : 27ABGCS4799A1Z2 | MSME : MH-26-0136442

+91 9822399538
+91 7030006838

www.yomindiapower.com
admin@yomindiapower.com

Gate No.311, Plot No. 7, 8, Gaud Dara Road, Nr. Chate College, Khed Shivapur, Pune- 412205, Maharashtra, India.

The world continues to gallop towards perfection at an extraordinary pace. Every new project is larger in scale and complexity than its predecessor, thereby posing greater challenge

Surmounting these challenges needs reliable solutions and that is exactly what WE, at **YomIndia Power** do. We deliver SOLUTIONS

Our capabilities reach beyond the ordinary and we deliver what most would call 'impossible'... hitherto neither imagined nor Achieved.

Welcome to the world of Yom India Power. Experience our strengths and commitment to overcome challenges. Partner us in your endeavours and benefit from SOLUTIONS that we bring to you



YOMINDIA POWER PRIVATE LIMITED

CIN : U31900PN2021PTC202796 | GST : 27ABGCS4799A1Z2 | MSME : MH-26-0136442

+91 9822399538
+91 7030006838

 www.yomindiapower.com
admin@yomindiapower.com

 Gate No.311, Plot No. 7, 8, Gaud Dara Road, Nr. Chate College, Khed Shivapur, Pune- 412205, Maharashtra, India.

YOMINDIA POWER PVT LTD

In its 1-decade long journey YomIndia Pvt. Ltd. has brought to life prestigious projects YomIndia initiated activity in the Design services sector. Encouraged by the growth potential in India, YomIndia launched its Manufacturing Engineering in 2018.

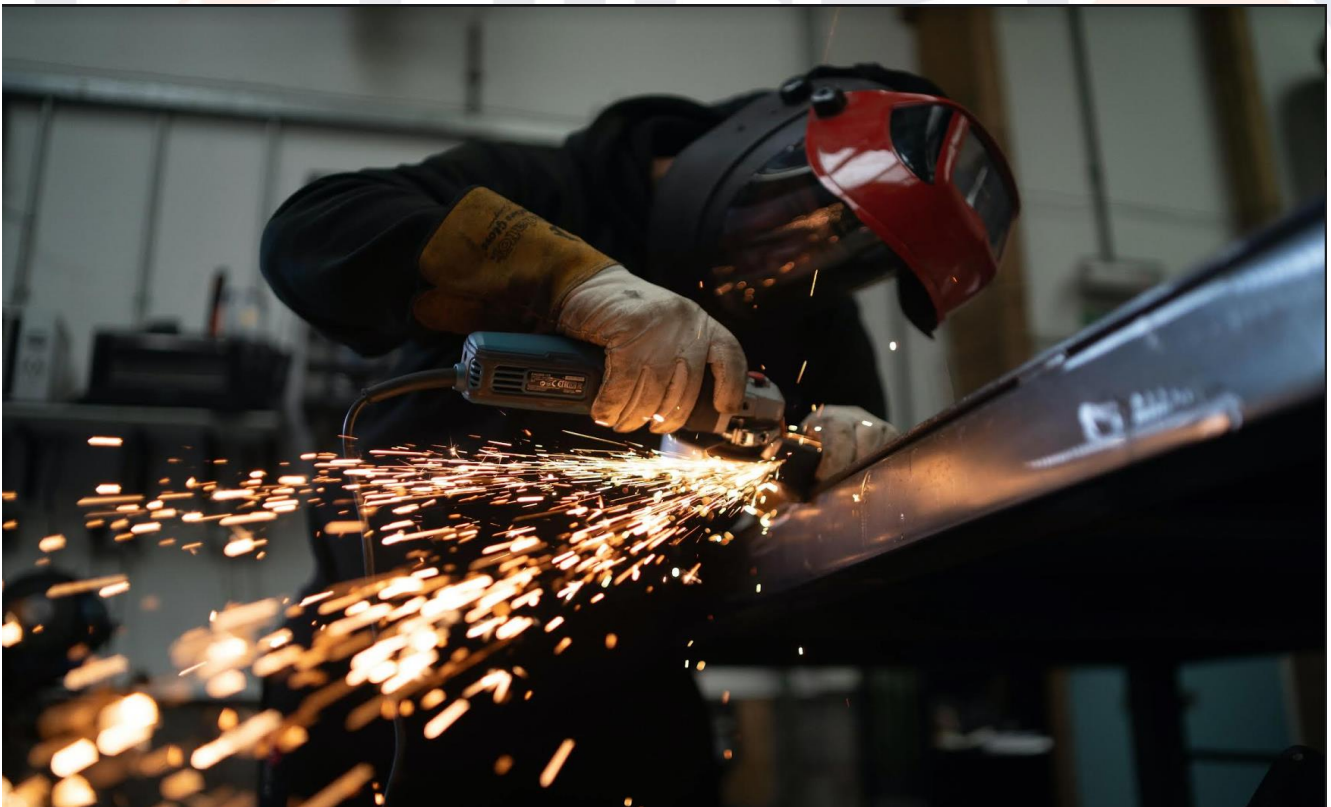
YomIndia today is a professionally managed corporate entity undertaking Engineering, Procurement and Construction (EPC) contracts on lump-sum turnkey basis. Our 'Customer First' approach coupled with the flexible strategy has helped us to align ourselves to meet the true requirement of our clients while executing Project Management Consultancy (PMC) assignment.

YomIndia is known for delivering comprehensive solutions that are practical and sustainable.

YomIndia has scripted various success stories in the challenging Indian business environment, with operations spread across sectors such as Defence, Power, Oil & Gas, Infrastructure and Industrial solutions.

With its 200+ dedicated Professionals from various fields, YomIndia enjoys a coveted position amongst its peers. This has also led to the growing stature of YomIndia ,extending engineering services to YOMINDIA Manufacturing Company.

We work towards “Engineering for Sustainable Growth of the Global Community” and commit ourselves towards contributing positively to the society at large.



YOMINDIA POWER PRIVATE LIMITED

CIN : U31900PN2021PTC202796 | GST : 27ABGCS4799A1Z2 | MSME : MH-26-0136442

+91 9822399538
+91 7030006838

 www.yomindiapower.com
admin@yomindiapower.com

 Gate No.311, Plot No. 7, 8, Gaud Dara Road, Nr. Chate College, Khed Shivapur, Pune- 412205, Maharashtra, India.

Key Differentiators

YomIndia has not just surpassed its competition. It has created a niche by setting unparalleled standards in various sectors. The key factors that give us the thrust to excel, include:

Our Flexible Approach

The lifecycle of a project covers all stages from feasibility study for investment through project planning, design, execution, commissioning and revamping or debottlenecking after completion. YomIndia serves its customers in flexible manner under a variety of contract schemes for each project phase. This is outcome of our ability to align ourselves with the needs of specific contract and adapt different project management practices for FEED, Engineering or Cost reimbursement contracts to conventional PMC or EPC contracts.

PRE PROJECT STAGE

- // Feasibility Study, Plant Cost Estimation
- // Detailed Project Report
- // Technology Selection, Arrangement
- // Assistance In Statutory Approvals

PROJECT IMPLEMENTATION STAGE POST-PROJECT STAGE

- // De-bottlenecking
 - // Optimization
 - // Feasibility Study, Plant Cost Estimation
 - // Detailed Project Report
 - // Technology Selection, Arrangement
 - // Assistance In Statutory Approvals
 - // Basic Design Engineering
 - // Front End Engineering Design (FEED)
 - // Detailed Engineering
 - // Project Management
 - // Procurement or Procurement Services
 - // Construction or Construction Management
- POST-PROJECT STAGE
- // De-bottlenecking
 - // Optimization

YOMINDIA POWER PRIVATE LIMITED

CIN : U31900PN2021PTC202796 | GST : 27ABGCS4799A1Z2 | MSME : MH-26-0136442

+91 9822399538 | www.yomindiapower.com | Gate No.311, Plot No. 7, 8, Gaud Dara Road, Nr. Chate
+91 7030006838 | admin@yomindiapower.com | College, Khed Shivapur, Pune- 412205, Maharashtra, India.

SPECIALISATIONS

YomIndia, a specialist in the Manufacturing sector, is also consolidating its position in fast emerging segment. These sectors reflect the growth of a country's economy and a lot is at stake when it comes to building these National Assets. We are proud to have built some of the finest amongst them in India. With our expertise, we have proven our mettle in project execution and management capabilities across the nation.

We are able to deliver results by leveraging our engineering strengths and our ability to become one with our client.



YOMINDIA POWER PRIVATE LIMITED

CIN : U31900PN2021PTC202796 | GST : 27ABGCS4799A1Z2 | MSME : MH-26-0136442

+91 9822399538
+91 7030006838

www.yomindiapower.com
admin@yomindiapower.com

Gate No.311, Plot No. 7, 8, Gaud Dara Road, Nr. Chate College, Khed Shivapur, Pune- 412205, Maharashtra, India.

MANUFACTURING FACILITIES:

- ▶ 1,500 sq. ft. of air-conditioned office
- ▶ Solid- Works Licensed copies of 3D Design software.
- ▶ Wireless Broadband
- ▶ 40 Kva UPS Backup (30 Minutes)
- ▶ Mobile rack storage system
- ▶ Unit 1 :- 28,000 sq. ft. of covered manufacturing space
- ▶ Unit 2 :- 20,000 sq. ft. of covered manufacturing space
- ▶ Turret Punching Machine of Amada & Yawei Make.
- ▶ Laser Cutting Facilities
- ▶ CNC Bending Facilities
- ▶ MIG/TIG/Rectifier welding stations with qualified welders
- ▶ Experienced supervision and inspection personnel for all processes
- ▶ Pneumatic and electrical hand tools for cutting, drilling, buffing operations
- ▶ Sophisticated PLC control pre-treatment facilities in both unit.
- ▶ Fully automatic powder coating facilities in both unit.
- ▶ Power connection Unit-1:- 100 HP & Unit-2 :- 65 HP
- ▶ Power Backup 125 Kva & 62.5 kva DG Set of Cummins Make
- ▶ Material handling, Fork-Lift of 3 Ton Capacity and storage equipment's.
- ▶ 20 HP Screw Compressor
- ▶ 5 Ton Overhead Crane
- ▶ Qualified welders
- ▶ Dedicated shop floor supervision
- ▶ Excellent vendor base for sub contracted work

YOMINDIA POWER PRIVATE LIMITED

CIN : U31900PN2021PTC202796 | GST : 27ABGCS4799A1Z2 | MSME : MH-26-0136442

+91 9822399538
+91 7030006838

 www.yomindiapower.com
admin@yomindiapower.com

 Gate No.311, Plot No. 7, 8, Gaud Dara Road, Nr. Chate College, Khed Shivapur, Pune- 412205, Maharashtra, India.

Factory Overview



YOMINDIA POWER PRIVATE LIMITED

CIN : U31900PN2021PTC202796 | GST : 27ABGCS4799A1Z2 | MSME : MH-26-0136442

+91 9822399538
+91 7030006838

www.yomindiapower.com
admin@yomindiapower.com

Gate No.311, Plot No. 7, 8, Gaud Dara Road, Nr. Chate College, Khed Shivapur, Pune- 412205, Maharashtra, India.

Laser Cutting Machine



ISO 9001:2015 CERTIFIED



YOMINDIA POWER PRIVATE LIMITED

CIN : U31900PN2021PTC202796 | GST : 27ABGCS4799A1Z2 | MSME : MH-26-0136442

+91 9822399538
+91 7030006838

www.yomindiapower.com
admin@yomindiapower.com

Gate No.311, Plot No. 7, 8, Gaud Dara Road, Nr. Chate College, Khed Shivapur, Pune- 412205, Maharashtra, India.



YOMINDIA POWER PRIVATE LIMITED

CIN : U31900PN2021PTC202796

GST : 27ABGCS4799A1Z2

MSME : MH-26-0136442

+91 9822399538
+91 7030006838

www.yomindiapower.com
admin@yomindiapower.com

Gate No.311, Plot No. 7, 8, Gaud Dara Road, Nr. Chate College, Khed Shivapur, Pune- 412205, Maharashtra, India.

Laser Machine Specifications

MACHINE SPECIFICATION	Details
Model	(ULE-3015-2000-IPG)
Machine Type	Pallet Changer
Capacity	2 Kw Fiber Laser
XYZ Running Area	3100 mm/1550mm/220mm
Weight	Approx. 9000 kg.
Workable Max. Sheet Size	1500 mm x 3000 mm
Maximum Material Thickness	16 mm Mild Steel
Maximum Material Thickness	8 mm Stainless Steel
Maximum Material Thickness	8 mm Aluminium
Maximum Material Thickness	5 mm Brass
Controller	Cypcut Controller



YOMINDIA POWER PRIVATE LIMITED

CIN : U31900PN2021PTC202796 | GST : 27ABGCS4799A1Z2 | MSME : MH-26-0136442

+91 9822399538
+91 7030006838

www.yomindiapower.com
admin@yomindiapower.com

Gate No.311, Plot No. 7, 8, Gaud Dara Road, Nr. Chate College, Khed Shivapur, Pune- 412205, Maharashtra, India.

Turret Punching Machine



TM

BRING ENERGY IN YOUR LIFE



File Photo (HPE reference)

applied

YOMINDIA POWER PRIVATE LIMITED

CIN : U31900PN2021PTC202796

GST : 27ABGCS4799A1Z2

MSME : MH-26-0136442

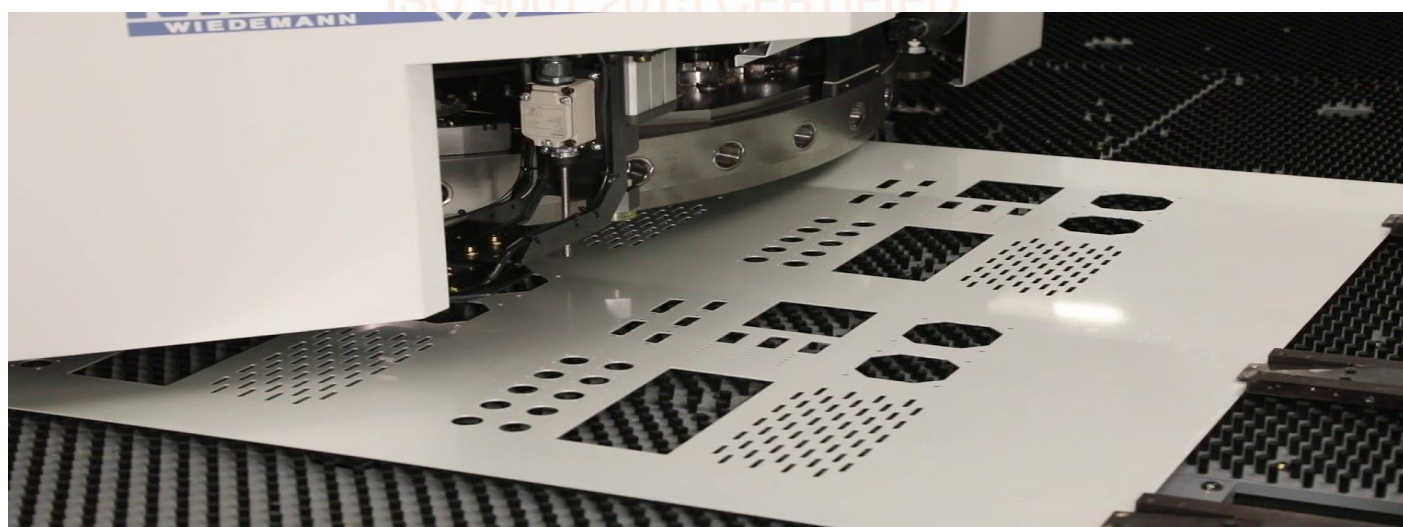
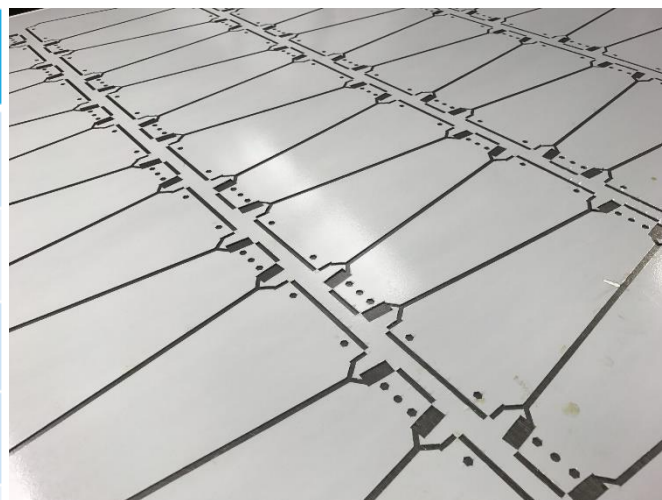
+91 9822399538
+91 7030006838

www.yomindiapower.com
admin@yomindiapower.com

Gate No.311, Plot No. 7, 8, Gaud Dara Road, Nr. Chate College, Khed Shivapur, Pune- 412205, Maharashtra, India.

Turret Punching Machine Specifications

MACHINE SPECIFICATION	Details
MAKE	Yawei NISSHINBO
Model	HPH 3048
Capacity	30 TON
STATION	30 WITH 2 AUTO INDEX
Workable Max. Sheet Size	3000 MM X 1250 MM
Maximum Material Thickness	3 mm Mild Steel
Maximum Material Thickness	2 mm Stainless Steel
Maximum Material Thickness	4 mm Aluminium
Weight	12 TON APPROX



ISO 9001:2015 CERTIFIED

YOMINDIA POWER PRIVATE LIMITED

CIN : U31900PN2021PTC202796

GST : 27ABGCS4799A1Z2

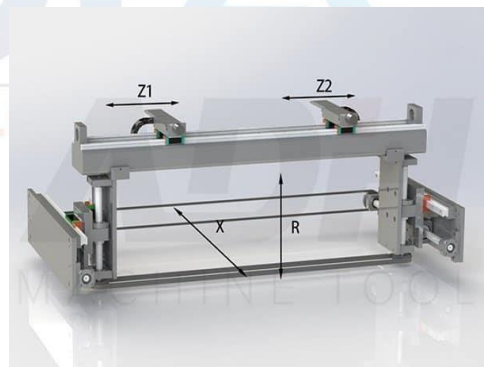
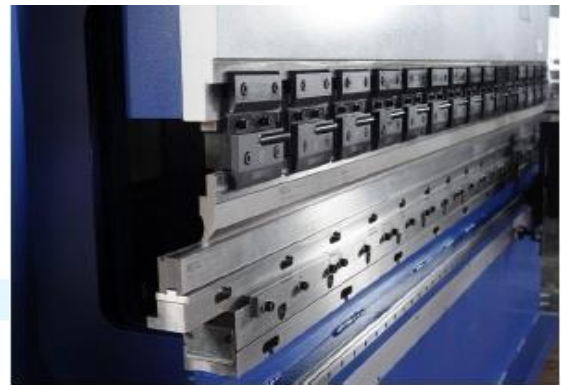
MSME : MH-26-0136442

+91 9822399538
+91 7030006838

www.yomindiapower.com
admin@yomindiapower.com

Gate No.311, Plot No. 7, 8, Gaud Dara Road, Nr. Chate College, Khed Shivapur, Pune- 412205, Maharashtra, India.

CNC Bending Facilities



CYBELEC Touch 12

- Controls 4 axes.
- Automatic bend sequencing (option).
- Bend allowance calculation.
- Pressure – crowning calculation.
- Modular tools for each part or bend.
- Angle and back gauge correction.
- Telemaintenance via wireless connection with PC or notebook.
- USB port for memory stick for data transfer/back-up.

Model	Unit	WAD-170T/3200
Bending Force	Kn	1700
Bending Length	mm	3200
Cutting Thickness	Mild Steel	6
	Stainless Steel	4

Model:	Unit	WADE-170T/3200
CNC Control Axis		Y1, Y2, X, R & V-axis
Bending force	Ton	170
Bending length	mm	3200
Distance between columns	mm	2700
Stroke	mm	200
Throat Depth	mm	450
Table Width	mm	100
Open Height	mm	490/470
WORKING SPEED:		
Fast Speed	mm/sec	160
Working Speed	mm/sec	10
Return Speed	mm/sec	100
Hydraulic Oil Grade & Quantity	Ltr	No. 68 & 300
Main Motor Power	KW	15
POWER SUPPLY		AC 415V, 3PH, 50HZ
OVERALL DIMENSIONS (L X W X H)		3800 X 2000 X 2800
WEIGHT	TON	11.8



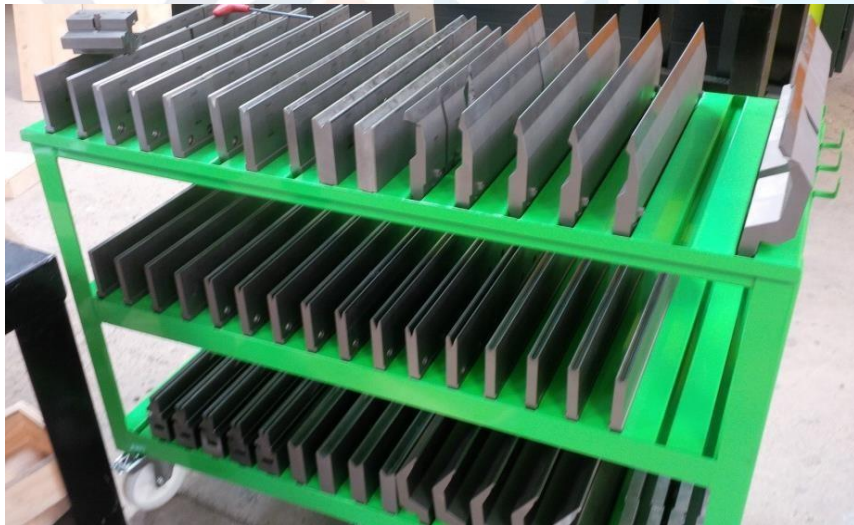
YOMINDIA POWER PRIVATE LIMITED

CIN : U31900PN2021PTC202796 | GST : 27ABGCS4799A1Z2 | MSME : MH-26-0136442

+91 9822399538
+91 7030006838

www.yomindiapower.com
admin@yomindiapower.com

Gate No.311, Plot No. 7, 8, Gaud Dara Road, Nr. Chate College, Khed Shivapur, Pune- 412205, Maharashtra, India.



YOMINDIA POWER PRIVATE LIMITED

CIN : U31900PN2021PTC202796 | GST : 27ABGCS4799A1Z2 | MSME : MH-26-0136442

+91 9822399538
+91 7030006838

www.yomindiapower.com
admin@yomindiapower.com

Gate No.311, Plot No. 7, 8, Gaud Dara Road, Nr. Chate College, Khed Shivapur, Pune- 412205, Maharashtra, India.

9 Tank Pre-Treatment & Powder Coating Facilities



Powder Coating Facilities



YOMINDIA POWER PRIVATE LIMITED

CIN : U31900PN2021PTC202796 | GST : 27ABGCS4799A1Z2 | MSME : MH-26-0136442

+91 9822399538
+91 7030006838

 www.yomindiapower.com
admin@yomindiapower.com

 Gate No.311, Plot No. 7, 8, Gaud Dara Road, Nr. Chate College, Khed Shivapur, Pune- 412205, Maharashtra, India.

PLANT SPECIFICATION	L X W X H
Pre-Treatment Tank Size	3500 X 1250 X 2000 mm
Pre-Treatment Type	7 Tanks Dip Type
Tank Capacity	Approx. 10000 Ltrs. each
Water Drying Type	Enclosed Drying Booth
Coating Booth Size	4000 X 1250 X 2500 mm
Recovery System	Double Cyclone
Powder Curing Oven Size	16000 X 1500 X 2500 mm
Heat Source	Gas Fired
Maximum Batch Load	1000 Kg.
Oven Working Temp.	180-200°C
Motor Rating	5 HP X 2 Nos
Compressor	20 HP



YOMINDIA POWER PRIVATE LIMITED

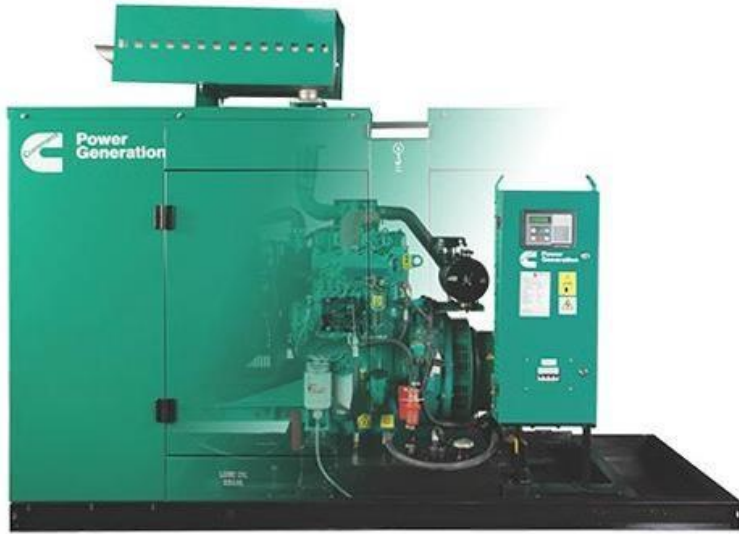
CIN : U31900PN2021PTC202796 | GST : 27ABGCS4799A1Z2 | MSME : MH-26-0136442

+91 9822399538
+91 7030006838

www.yomindiapower.com
admin@yomindiapower.com

Gate No.311, Plot No. 7, 8, Gaud Dara Road, Nr. Chate College, Khed Shivapur, Pune- 412205, Maharashtra, India.

Power Backup DG Sets



125 kva



Material Handling Facilities

Godrej | MATERIAL HANDLING



YOMINDIA POWER PRIVATE LIMITED

CIN : U31900PN2021PTC202796 | GST : 27ABGCS4799A1Z2 | MSME : MH-26-0136442

+91 9822399538
+91 7030006838

www.yomindiapower.com
admin@yomindiapower.com

Gate No.311, Plot No. 7, 8, Gaud Dara Road, Nr. Chate College, Khed Shivapur, Pune- 412205, Maharashtra, India.

40 Kva Online UPS



MAKE : FUJI ELECTRIC FALCON 8500

TYPE : ONLINE UPS

RATING : 40 KVA / 360 VDC, 3PH-3PH,

BACKUP : 30 Minutes

BATTERY'S : 12V/65 Ah x 32 Nos.

30 Kva VOLTAGE STABILIZER



MODEL : TPAC (30 KVA)

TYPE : AIR COOLED

Multifunction LCD VAF Meter, Indoor Type,

Input Voltage : 340 – 480 V 3 Ph

Output Voltage : 415 V AC +1% , 3 Ph

20 HP COMPRESSOR



Horse Power: 20 HP

Compressor Technology: Air Compressor

Discharge Pressure: up to 25kg/cm2

Air Tank capacity : 500 (Liters)

SMALL MACHINES



MACHINE SPECIFICATION	QUANTITY
INVA MIG 400 D MOGORA	10
400 AMP ESAB	10
BOSCH 5" HEAVY DUTY GRINDER	1
MAGNETIC DRILL MACHINE	1
INVA TIG 400 D MOGORA	1
BOSCH 4" GRINDER	7
ESAB NM GAS CUTTER	1
DEWALT DRILL MACHINE	2
BOSCH CORDLESS DRILL DRIVER	2
PNEUMATIC POP RIVET GUN	1
DEWALT HEAVY DUTY CHOP SAW MACHINE	1



YOMINDIA POWER PRIVATE LIMITED

CIN : U31900PN2021PTC202796 | GST : 27ABGCS4799A1Z2 | MSME : MH-26-0136442

+91 9822399538
+91 7030006838

www.yomindiapower.com
admin@yomindiapower.com

Gate No.311, Plot No. 7, 8, Gaud Dara Road, Nr. Chate College, Khed Shivapur, Pune- 412205, Maharashtra, India.

MEASURING INSTRUMENTS



We Offer :-



YOMINDIA POWER PRIVATE LIMITED

CIN : U31900PN2021PTC202796 | GST : 27ABGCS4799A1Z2 | MSME : MH-26-0136442

+91 9822399538
+91 7030006838

www.yomindiapower.com
admin@yomindiapower.com

Gate No.311, Plot No. 7, 8, Gaud Dara Road, Nr. Chate College, Khed Shivapur, Pune- 412205, Maharashtra, India.

Human Resource

YomIndia's large pool of qualified and experienced manpower covering all major disciplines is an asset that makes us stand apart from our peers. Today, our workforce is of about 300 dedicated employees inclusive of 150+ experienced engineers and talented designers from all requisite disciplines.

Our human resource is our most valuable asset. We earnestly strive to improve their engineering skills through in-house and customized training programs.

We assign our engineers and designers to various overseas locations of our group affiliates in both design offices and at plant sites. Dedicated co-working on third country projects enables our engineers to get first-hand exposure to demanding international environments and a distinct work culture.



Engineering Tools

Procurement YomIndia has its Engineering Centre and Project offices at Pune. All our engineering and project execution support departments; equipped with the latest engineering tools are always prepared to take on the challenges of mega-sized projects. Three Dimensional walkthroughs of Complex process plants enables construction groups to identify critical aspects of the projects and helps in achieving fast track completion.

Procurement

Our procurement network proves our superior supply chain management and our capability to source almost anything from anywhere across the nation. This is possible with YomIndia's presence across the nation and immaculate co-ordination amongst all the subsidiaries. We ensure that the procurement ranks high in quality and value for money. Our risk minimization methods are fairly effective in ensuring that the projects do not get delayed due to lack of resources



YOMINDIA POWER PRIVATE LIMITED

CIN : U31900PN2021PTC202796 | GST : 27ABGCS4799A1Z2 | MSME : MH-26-0136442

+91 9822399538 | www.yomindiapower.com | Gate No.311, Plot No. 7, 8, Gaud Dara Road, Nr. Chate
+91 7030006838 | admin@yomindiapower.com | College, Khed Shivapur, Pune- 412205, Maharashtra, India.

Yomindia Power Pvt Ltd Is An

“Integrated Customised Solution Provider of Electro-Mechanical Systems through Design, Manufacturing and Onsite Installation capabilities under a single roof. “

A :- Design Services

B :- Manufacturing services

C :- Laser Cutting Services

D :- Pre-Treatment & Powder Coating

E :- Quality and Documentations

F :- Onsite Support Services



DESIGN & ENGINEERING SERVICES

DESIGN AND DEVELOPMENT

STRUCTURAL ANALYSIS

DETAILED MANUFACTURING DRAWINGS

DETAILED PURCHASE BILL OF MATERIAL

MANUFACTURING & ON-SITE INSTALLATION SUPPORT

YOMINDIA POWER PRIVATE LIMITED

CIN : U31900PN2021PTC202796 | GST : 27ABGCS4799A1Z2 | MSME : MH-26-0136442

+91 9822399538
+91 7030006838

www.yomindiapower.com
admin@yomindiapower.com

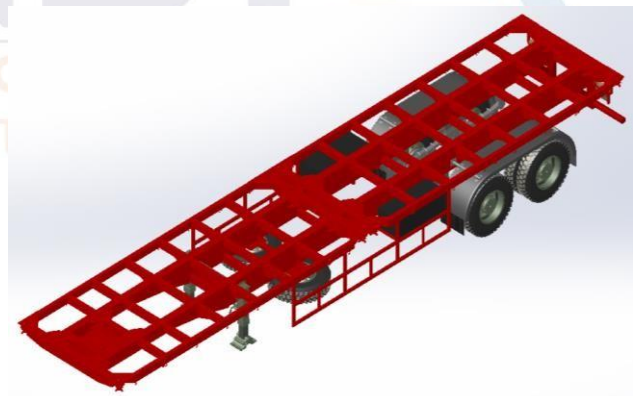
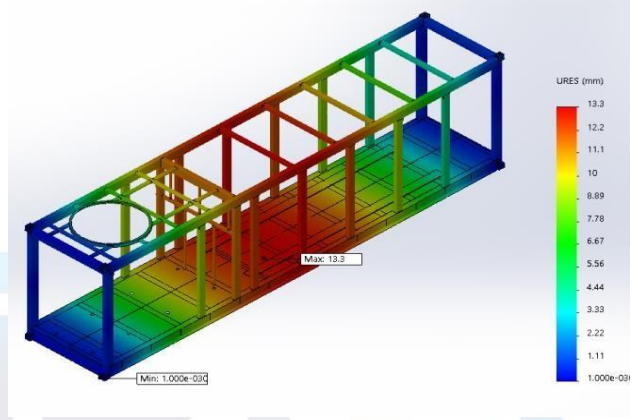
Gate No.311, Plot No. 7, 8, Gaud Dara Road, Nr. Chate
College, Khed Shivapur, Pune- 412205, Maharashtra, India.

Design and engineering solutions.

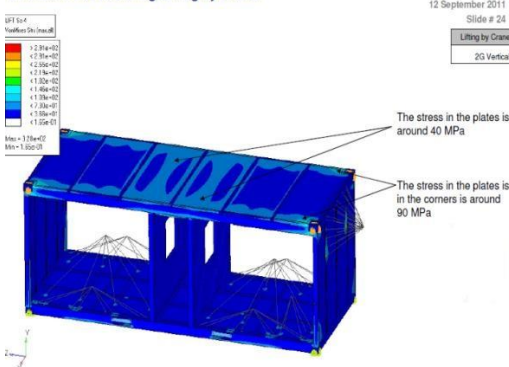
Pre-Treatment and Powder coating services.

Manufacturing of following Products: -

- Custom build trailers and semi-trailers.
- Custom build containers for wide applications.
- Metal/Structural frameworks and skeletons.
- Enclosures and cabinets.
- E-House Air-Conditioned Container
- Acoustic treated products.
- ATM Kiosks.
- Storage and pallet racks.
- Storage tanks.
- Prefabricated shelters.
- Fire/Safety doors.
- Weatherproof doors.
- Battery trays and boxes.



VonMises Stress During Lifting by Crane

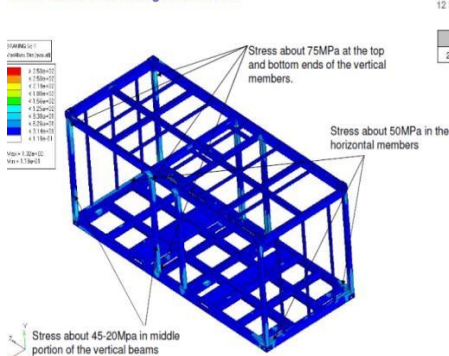


Report # C006-P011-001
12 September 2011
Slide # 24

Lifting by Crane

2D Vertical

VonMises Stress During Acceleration



Report # C006-P011-001
12 September 2011
Slide # 10

Braking

2D Forward 1g vertical

YOMINDIA POWER PRIVATE LIMITED

CIN : U31900PN2021PTC202796

GST : 27ABGCS4799A1Z2

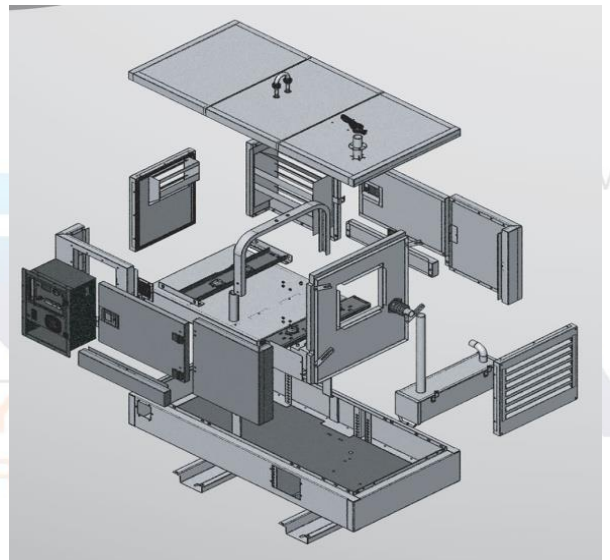
MSME : MH-26-0136442

+91 9822399538
+91 7030006838

www.yomindiapower.com
admin@yomindiapower.com

Gate No.311, Plot No. 7, 8, Gaud Dara Road, Nr. Chate College, Khed Shivapur, Pune- 412205, Maharashtra, India.

PRODUCTS :-



YOMINDIA POWER PRIVATE LIMITED

CIN : U31900PN2021PTC202796 | GST : 27ABGCS4799A1Z2 | MSME : MH-26-0136442

+91 9822399538
+91 7030006838

www.yomindiapower.com
admin@yomindiapower.com

Gate No.311, Plot No. 7, 8, Gaud Dara Road, Nr. Chate College, Khed Shivapur, Pune- 412205, Maharashtra, India.



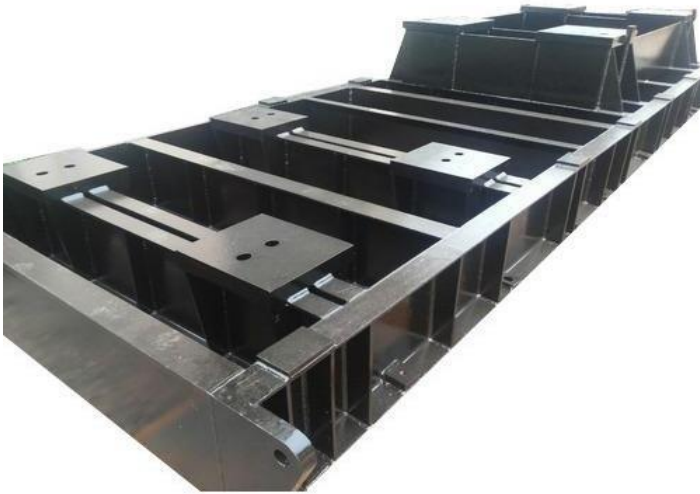
YOMINDIA POWER PRIVATE LIMITED

CIN : U31900PN2021PTC202796 | GST : 27ABGCS4799A1Z2 | MSME : MH-26-0136442

+91 9822399538
+91 7030006838

www.yomindiapower.com
admin@yomindiapower.com

Gate No.311, Plot No. 7, 8, Gaud Dara Road, Nr. Chate College, Khed Shivapur, Pune- 412205, Maharashtra, India.



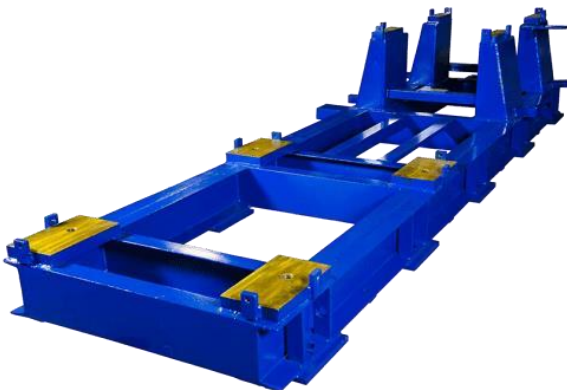
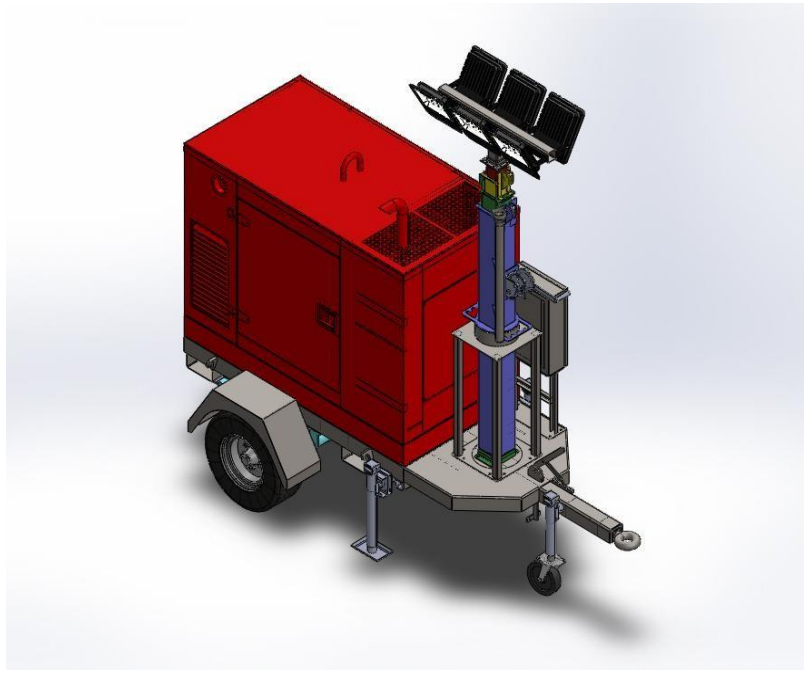
YOMINDIA POWER PRIVATE LIMITED

CIN : U31900PN2021PTC202796 | GST : 27ABGCS4799A1Z2 | MSME : MH-26-0136442

+91 9822399538
+91 7030006838

www.yomindiapower.com
admin@yomindiapower.com

Gate No.311, Plot No. 7, 8, Gaud Dara Road, Nr. Chate College, Khed Shivapur, Pune- 412205, Maharashtra, India.



YOMINDIA POWER PRIVATE LIMITED

CIN : U31900PN2021PTC202796

GST : 27ABGCS4799A1Z2

MSME : MH-26-0136442

+91 9822399538
+91 7030006838

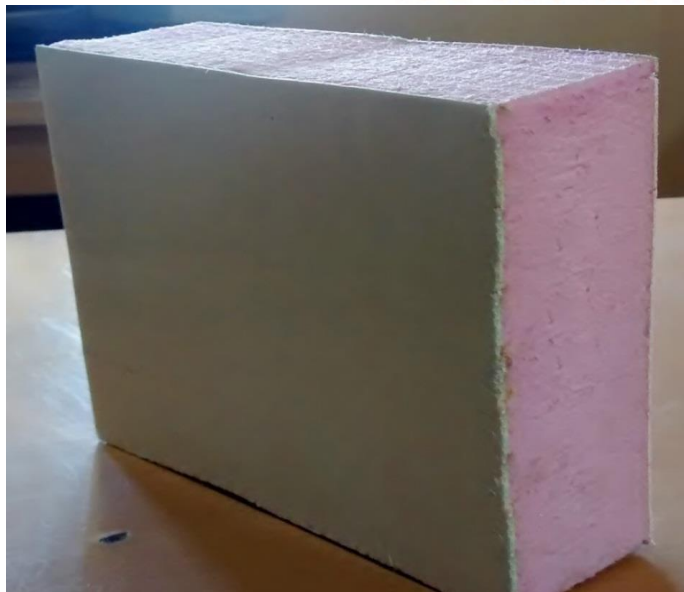
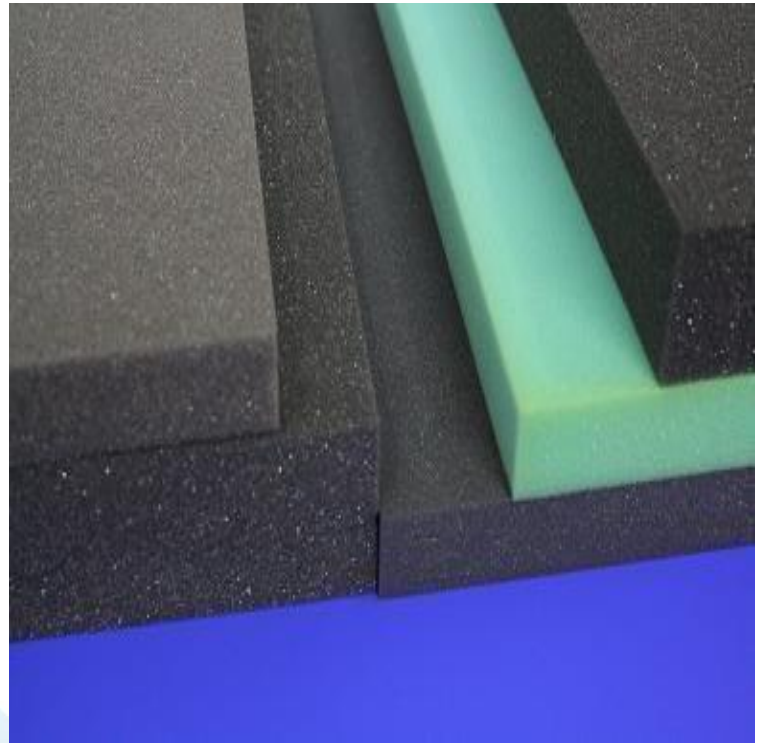
www.yomindiapower.com
admin@yomindiapower.com

Gate No.311, Plot No. 7, 8, Gaud Dara Road, Nr. Chate College, Khed Shivapur, Pune- 412205, Maharashtra, India.

Acoustic :-

INSULATION MATERIALS:

- ▶ PU Foam Thickness-15mm
- ▶ PU Foam Thickness-20mm
- ▶ PU Foam Thickness-25mm
- ▶ PU Foam Thickness-40mm
- ▶ Bonded Panels 25/50/80mm
- ▶ Rockwool 50/100mm



YOMINDIA POWER PRIVATE LIMITED

CIN : U31900PN2021PTC202796 | GST : 27ABGCS4799A1Z2 | MSME : MH-26-0136442

+91 9822399538
+91 7030006838

 www.yomindiapower.com
admin@yomindiapower.com

 Gate No.311, Plot No. 7, 8, Gaud Dara Road, Nr. Chate College, Khed Shivapur, Pune- 412205, Maharashtra, India.

QUALITY CONTROL

- ▶ At Yomindia Power Pvt Ltd, business is conducted on a total quality system.
- ▶ All products are submitted to the Quality-Control personnel, who subject them to a number of tests to be able to guarantee their perfect functioning.
- ▶ Yomindia Power Pvt Ltd, is proud to have developed excellent quality management system centred on –
 - An in-depth product and process knowledge,
 - A passionate approach to customer satisfaction,
 - The development of employees
 - The company's drive for continuous improvement in all aspects of its business
- ▶ Yomindia Power Pvt Ltd, has extensive knowledge with skilful and competent staff who concentrates on custom-built products in various specialized fields.
- ▶ All products are fully engineered and pre tested to meet our stringent quality control standards, thus assuring the satisfaction of our own requirements as well as easy maintenance and minimum downtime.
- ▶ Individual pre-production components are scanned and digitally evaluated by computer to check the accuracy of the tooling and machine set-up prior to the production of the jobs. During production, technicians carefully check each step of their work with calibrated inspection equipment and frequent references to blueprints and job routings with special notes that accompany each job. Technicians use 6, 8, 12, 18, and 24 in. callipers, Vernier and digital height gauges and granite surface plates located strategically throughout the production facility and in the quality assurance area.
- ▶ Our operational excellence programs, focusing on reducing costs and improving efficiencies for our customer programs, enable us to deliver industry leading quality and customer service.

YOMINDIA POWER PRIVATE LIMITED

CIN : U31900PN2021PTC202796 | GST : 27ABGCS4799A1Z2 | MSME : MH-26-0136442

+91 9822399538
+91 7030006838

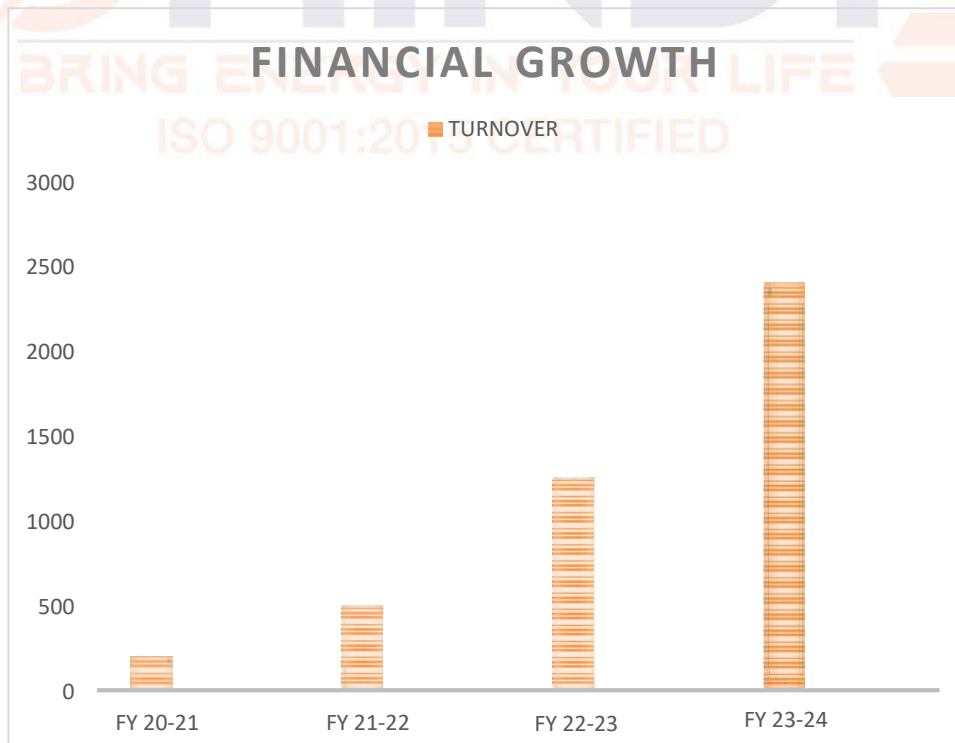
www.yomindiapower.com
admin@yomindiapower.com

Gate No.311, Plot No. 7, 8, Gaud Dara Road, Nr. Chate College, Khed Shivapur, Pune- 412205, Maharashtra, India.

Manpower Strength

Description	Nos.	Description	Nos.
AGM	3	Painting & Powder coating In-charge	04
Design Manager	1	Laser machine In-charge	03
Sr. Design Engineers	3	CNC Bending In-Charge	05
Design Engineers	2	Assembly In-charge	01
Marketing Manager	1	Maintenance In-Charge	01
Purchase Manager	1	Electrician	01
Purchase & Store Engineer	3	Skilled Company Labour	10
Account/Finance, HR Manager	3	Semi-Skilled Company Labour	10
Quality Manager	1	Unskilled Labour	16
Quality Engineer	6	Fabrication Contract Team	15
Production Manager	2	Assembly Contract Team	15
Production Engineer	5	Skilled Aluminium/SS Team	14
Security Officer	3	Housekeeping	03
Total	35	Total	98

FINANCIAL GROWTH



YOMINDIA POWER PRIVATE LIMITED

CIN : U31900PN2021PTC202796

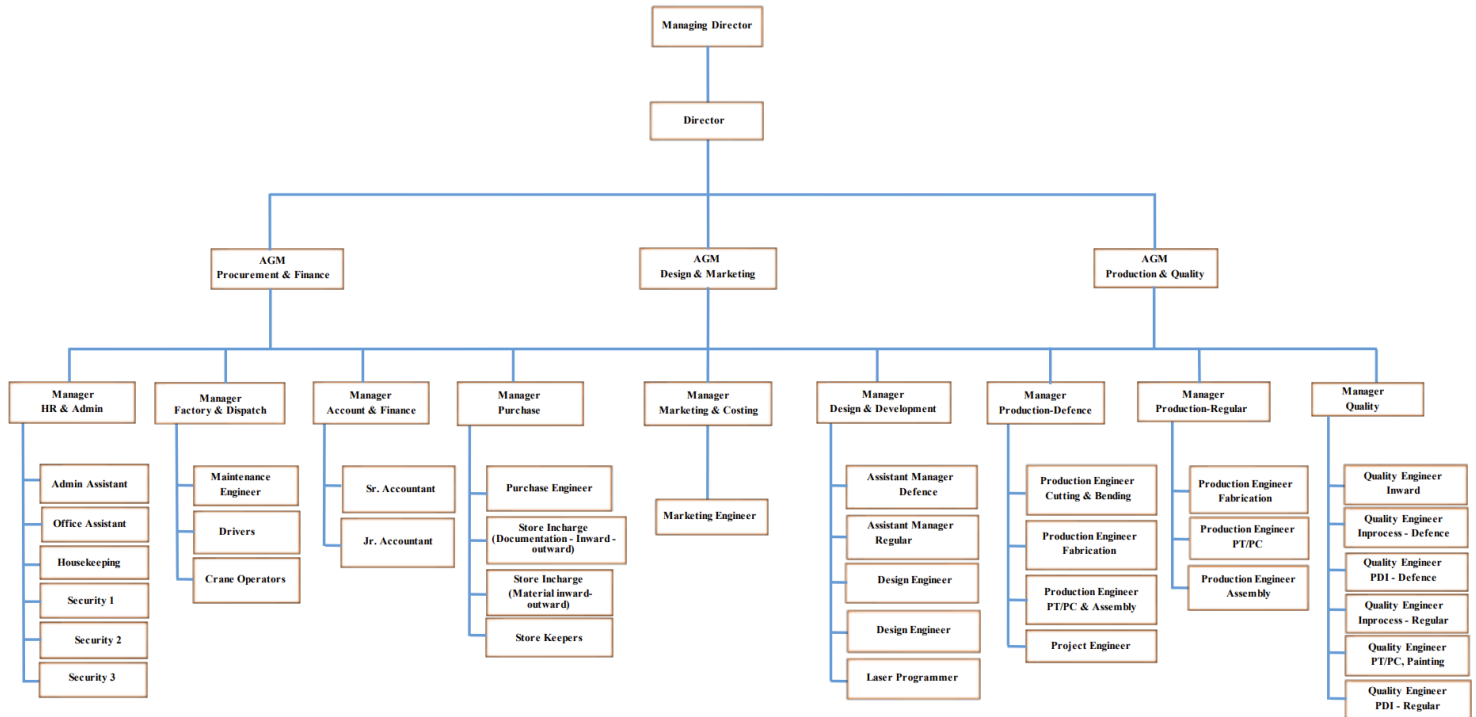
GST : 27ABGCS4799A1Z2

MSME : MH-26-0136442

+91 9822399538
+91 7030006838

www.yomindiapower.com
admin@yomindiapower.com

Gate No.311, Plot No. 7, 8, Gaud Dara Road, Nr. Chate
College, Khed Shivapur, Pune- 412205, Maharashtra, India.



YOMINDIA POWER PRIVATE LIMITED

CIN : U31900PN2021PTC202796 | GST : 27ABGCS4799A1Z2 | MSME : MH-26-0136442

+91 9822399538
+91 7030006838

www.yomindiapower.com
admin@yomindiapower.com

Gate No.311, Plot No. 7, 8, Gaud Dara Road, Nr. Chate College, Khed Shivapur, Pune- 412205, Maharashtra, India.



YOMINDIA POWER PRIVATE LIMITED

CIN : U31900PN2021PTC202796 | GST : 27ABGCS4799A1Z2 | MSME : MH-26-0136442

+91 9822399538
+91 7030006838

www.yomindiapower.com
admin@yomindiapower.com

Gate No.311, Plot No. 7, 8, Gaud Dara Road, Nr. Chate College, Khed Shivapur, Pune- 412205, Maharashtra, India.

We offering the Customer a **“Single Window Solutions”** through a complete in-house team and facilities monitoring the quality and processes to ensure products exceed customer expectations.

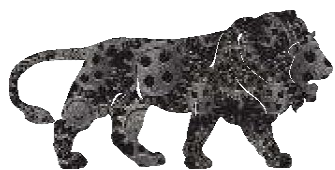
Yomindia Power Private Limited can be your trusted design and manufacturing Partner for all your turnkey & customized project/product’s needs.

We at YomIndia find our inspiration in the words -

“A customer is the most important visitor on our premises. He is not dependent on us. We are dependent on him. He is not an interruption in our work. He is the purpose of it. He is not an outsider in our business. He is part of it. We are not doing him a favour by serving him. He is doing us a favour by giving us an opportunity to do so.”



Registered office	FL B-202, SN 32/5A/2, Sarthak Beaulieu, Pisoli, Pune –411060, Maharashtra, India.
Unit -1	Gat No. 311, Plot No. 7,8, Gaudara Road, Nr. Chate Collage, Khed Shivapur, Pune -412205, Maharashtra, India.
Unit -2	Gat No. 325, Gaudara Road, Khed Shivapur, Pune -412205, Maharashtra, India.



YOMINDIA POWER PRIVATE LIMITED

CIN : U31900PN2021PTC202796

GST : 27ABGCS4799A1Z2

MSME : MH-26-0136442

+91 9822399538
+91 7030006838

www.yomindiapower.com
admin@yomindiapower.com

Gate No.311, Plot No. 7, 8, Gaud Dara Road, Nr. Chate College, Khed Shivapur, Pune- 412205, Maharashtra, India.